

# LOS ANGELES CONFIDENTIAL™

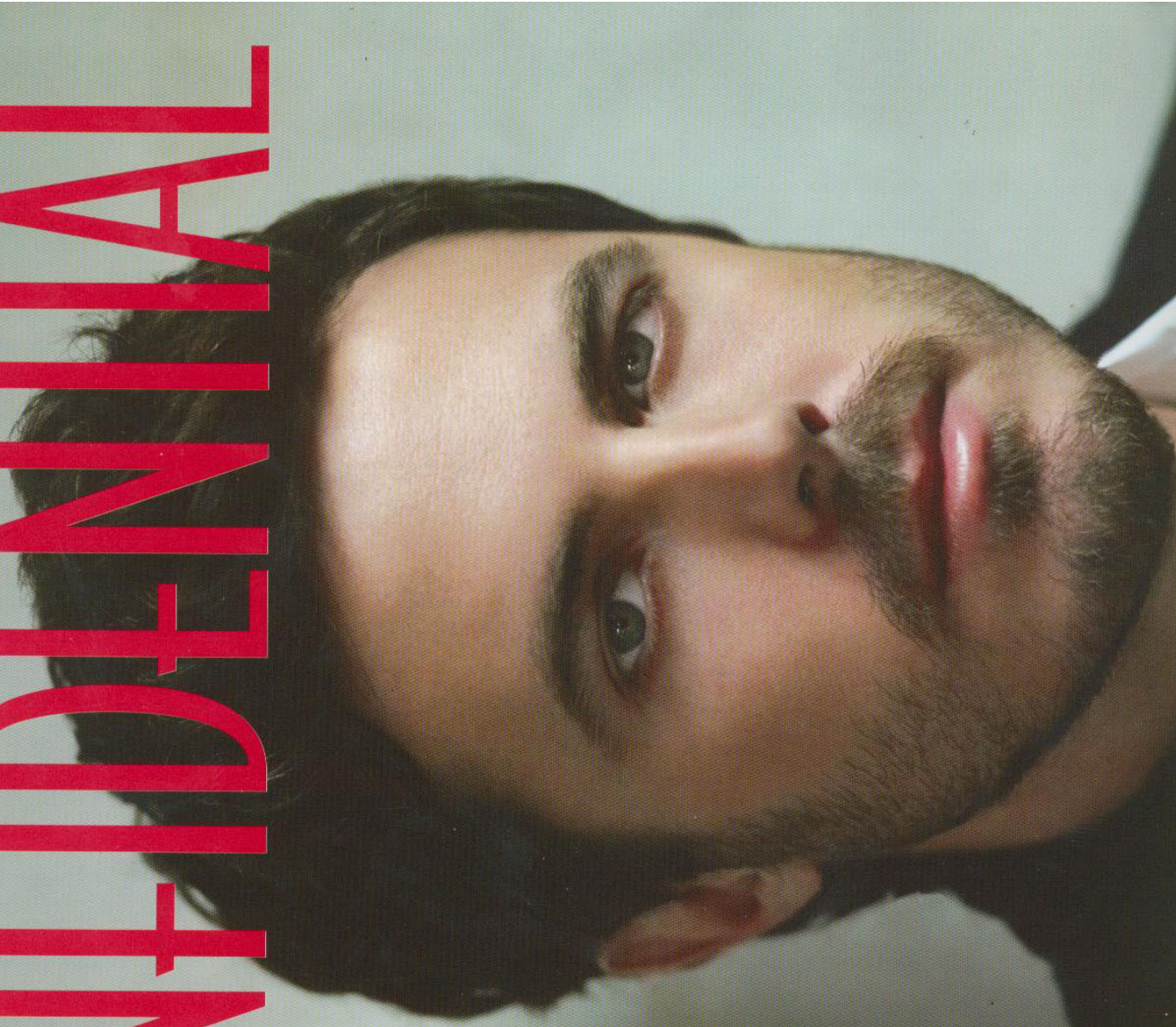
EXCLUSIVE

## Casey Affleck

BREAKS ON THROUGH  
TO THE OTHER SIDE

**POWER TRIP WITH**

SHANNYN SOSSAMON  
WOLF BLITZER  
BEN FOSTER  
JOSH BROLIN  
ADAM SHANKMAN  
EMILE HIRSCH  
TIM ROTH  
MIKE NEWELL  
SHEMAR MOORE  
JULIE DELPY &  
GEORGE CLOONEY



# Time for a Good Cause

Celebrities and top luxury watch brands join forces in star-studded charity events.—R.N.



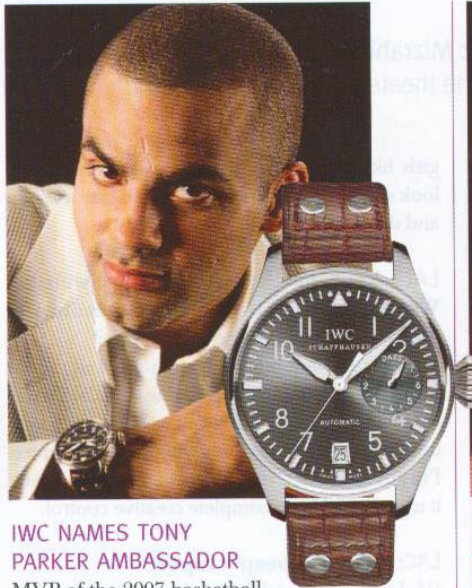
## DIOR CELEBRATES ITS 60TH ANNIVERSARY WITH SHARON STONE

Dior ambassador Sharon Stone was mistress of ceremonies at the prestigious house's 60th anniversary celebration. The event was also the inauguration of Peter Marino's new design for the esteemed house's flagship on Avenue Montaigne.



Stone's arrival was timed to the second, thanks to her stunning Dior Christal watch, complete with a bezel set with baguette diamonds and a bracelet of gray and white sapphire crystal pyramids. After a wonderful dinner, Elton John sang several songs for the 250 guests.

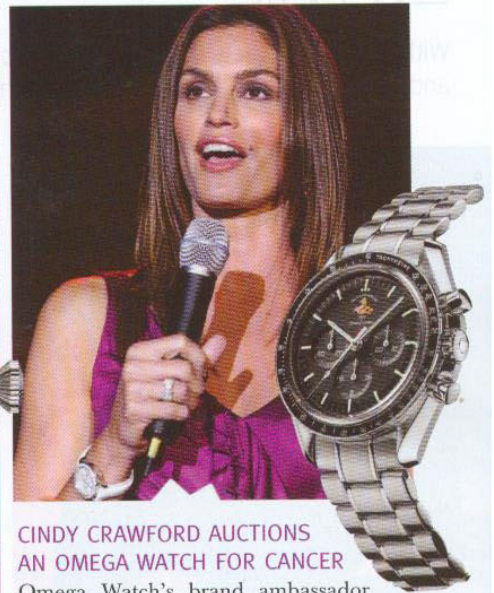
**Dior's Christal Dégradée Chronograph** (\$29,995) has a sapphire crystal pyramid bracelet and baguette diamonds on the bezel. Set off with a mother-of-pearl dial, the watch comes in a limited edition of 47 pieces in two sizes: a 33mm version and a 38mm chronograph model (shown here). *Dior, 309 North Rodeo Drive, Beverly Hills, 310-859-4700.*



## IWC NAMES TONY PARKER AMBASSADOR

MVP of the 2007 basketball championships, the San Antonio Spurs' Tony Parker—the second NBA player (after Kobe Bryant) to win three championships by age 25—has entered into a collaboration with luxury Swiss watch brand International Watch Co. (IWC). "I appreciate the design and craftsmanship of IWC watches and the charitable enterprises that companies take on," says Parker. "In this area IWC stood out with initiatives such as the Laureus Sport for Good Foundation, which helps underprivileged youth around the world." First ambassador to the Make A Wish Foundation in France, Parker regularly donates a block of 20 tickets for each home game to underserved youth.

Boasting the largest automatic movement of any timepiece, the **IWC Big Pilot** (\$25,000), crafted in 18k white gold and measuring 46mm in diameter, is a flagship watch for the brand. *Available at Feldmar Watches, 9000 West Pico Boulevard, Los Angeles, 310-274-8016.*



## CINDY CRAWFORD AUCTIONS AN OMEGA WATCH FOR CANCER

Omega Watch's brand ambassador since 1995, Cindy Crawford recently made a personal appearance at Bachendorf's Jewelers in Dallas. She signed autographs and helped auction a limited-edition Omega Speedmaster during the Cattle Baron's Ball, America's largest fundraising event for the American Cancer Society. Retailing at \$4,000, the watch, together with a personal tour of the Johnson Space Center by General Thomas Stafford, fetched \$17,000. In celebration of the 50th anniversary of the legendary Speedmaster, the first and only watch that made it to the moon, Omega created the limited-edition Speedmaster Professional Moonwatch Co-Axial Limited Series to commemorate the year the watch launched—1957—by producing just 57 pieces in yellow, white, and rose gold, and 1,957 pieces in stainless steel.

The limited-edition **Omega Speedmaster watch** (\$4,000) offers chronograph and tachymeter functions. *Omega, 329 North Rodeo Drive, Beverly Hills, 310-860-9990; omegawatches.com.*



## BOZEMAN WATCH CO. AUCTIONS WATCH FOR FIRE VICTIMS

Following the recent fires that raged across Southern California and displaced hundreds of thousands, the Montana-based Bozeman Watch Company announced that it would raise money for those affected by the natural disaster. The company set up an online auction of the SmokeJumper No. 80 timepiece, with 100 percent of proceeds going to assist the fire victims through the American Red Cross. All watches built by Bozeman Watch Company are produced in limited editions of 100 numbered pieces. The **SmokeJumper Chronograph** (\$6,300) is the official timepiece of the National Smokejumper Association, which is based in Missoula, Montana.